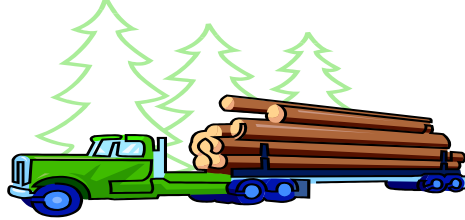


Washington District 3 Little League



2010 Washington State Major Baseball Tournament

Guidelines for Play

1. Play will be conducted in accordance with the Official Regulations and Playing Rules for All Divisions of Little League Baseball and Softball, 2010 Editions, including all updates.
2. The Tournament Director will collect your team's affidavit and supporting documentation at the mandatory managers meeting. After the information has been approved the manager will have the option to leave the affidavit with the Tournament Director for the duration of the tournament or keep the affidavit in his/her possession. The affidavit must be presented to the Tournament Director prior to the coin toss. The manager should carry medical releases and supporting documentation with them while on the tournament site.
3. All teams will report to the field ready to play at least one hour prior to game time. The manager should report to the scorer's booth to locate the Tournament Director to complete a coin toss to determine the home/visiting team and receive an official line-up card. The team listed on the bottom of the bracket will call the coin toss. If only one team is present at the coin toss, they will have the choice of home/visitor. Home team will occupy the third base dug-out. Each manager will receive an official line-up card. Line-up cards must be completely filled out, including players first and last names. Completed line-up cards should be turned in to the official scorer thirty minutes prior to game time. The four part line-up card will be distributed as follows: official book - top copy, opposing team - second copy, your team - third copy and the home plate umpire - the bottom copy. Please press hard when filling out the line-up card.
4. All position changes will go through the home plate umpire, whom in turn will inform the official scorer. The official scorer will announce all changes received from the home plate umpire prior to the beginning of each half inning. The manager, coaches and players will have no contact with anyone located outside the dugout. If a team wishes to keep their own scorebook, it must be done by a coach in the dugout. During the game, coaches and players must remain in the dugout, unless given permission to exit by an umpire, including going to the bull pen or the restroom. Cell phones or other communication devices will not be used in the dugout.

5. After the game the manager must report to the scorer's booth and initial the pitching records. Discrepancies will be corrected at this time. The manager is responsible for reviewing the pitching records on the affidavit to determine player eligibility for the next game. After a team has been eliminated from the tournament the manager is responsible for collecting the affidavit.
6. Each team will get ten minutes of infield/outfield warm-up time. The visiting team will begin a half-hour before game time. Both teams will be introduced prior to each game. The national anthem will be played prior to the opening day's game. The Little League pledge will be recited before each game. Managers will meet with the umpires at home plate, submit their line-up card and go over local ground rules. Games will not begin until scheduled start time.
7. Batting/fielding practice will not be allowed on the tournament field. There are several adjacent fields designated for this purpose. Please talk to the onsite coordinator if you would like to use one of these fields.
8. In the case of an on-field injury, only the manager will be allowed on the field, and only after play has stopped and the umpire call time.
9. The tournament team manager and coaches must present a neat and clean appearance. Slacks or walking shorts (no shorter than 3" above the knee) are the preferred dress. The only logo permitted on the shirt is the leagues logo and/or the Little League logo. Tank tops, T-shirts, halter tops, bike shorts, cut-off shorts, etc. are not permitted. Hats, if worn, must match the team's hat.
10. Protests must be presented immediately to the umpire-in-chief and must be resolved prior to the next pitch or play.
11. Good sportsmanship is expected at all times. No tobacco or alcohol products are allowed within the park. Players calling out words in order to distract a batter or pitcher will not be allowed. Abusive language, trash talk, and taunting from players, coaches or fans directed at the umpires or the opposing team will not be tolerated.
12. Participation pins will be awarded to all players, the manager and up to two coaches. Home-run balls shall not be presented to players or parents.

LET'S PLAY BALL!